

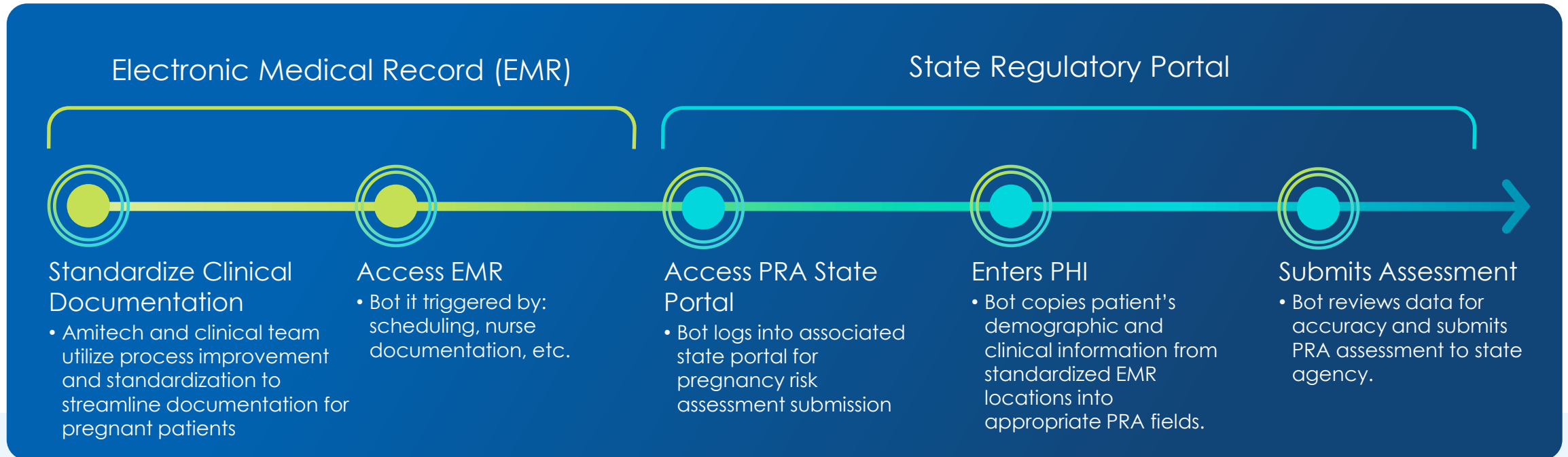
# Pregnancy Risk Assessment (PRA)

Women's Health

Automation  
90%

Annual hours saved  
2,700

Annual labor savings  
\$156,000



## Business challenge:

Three PRA submissions per pregnant patient are mandated in health system's state of operation. PRAs are completed by clinical staff (Nurses, APNs, and Midwives). With over 350 required fields of PHI and non-standardized location for this information in clinic's EMR, PRA submission was extremely time intensive and prone to documentation errors.

## Automation solution overview:

Through process improvement efforts, an unattended bot will acquire all necessary patient health information from the standardized EMR locations, transpose the PHI into the necessary formatting for the PRA, and enter the data into the required fields. The bot will review all information for accuracy and when it can attest all mandatory fields have been completed, bot will then submit the PRA to the state agency.

## Applications

- EMR
- State Portal/Browser

# Automation opportunities: Prenatal risk assessment journey map

Workflow before automation implementation

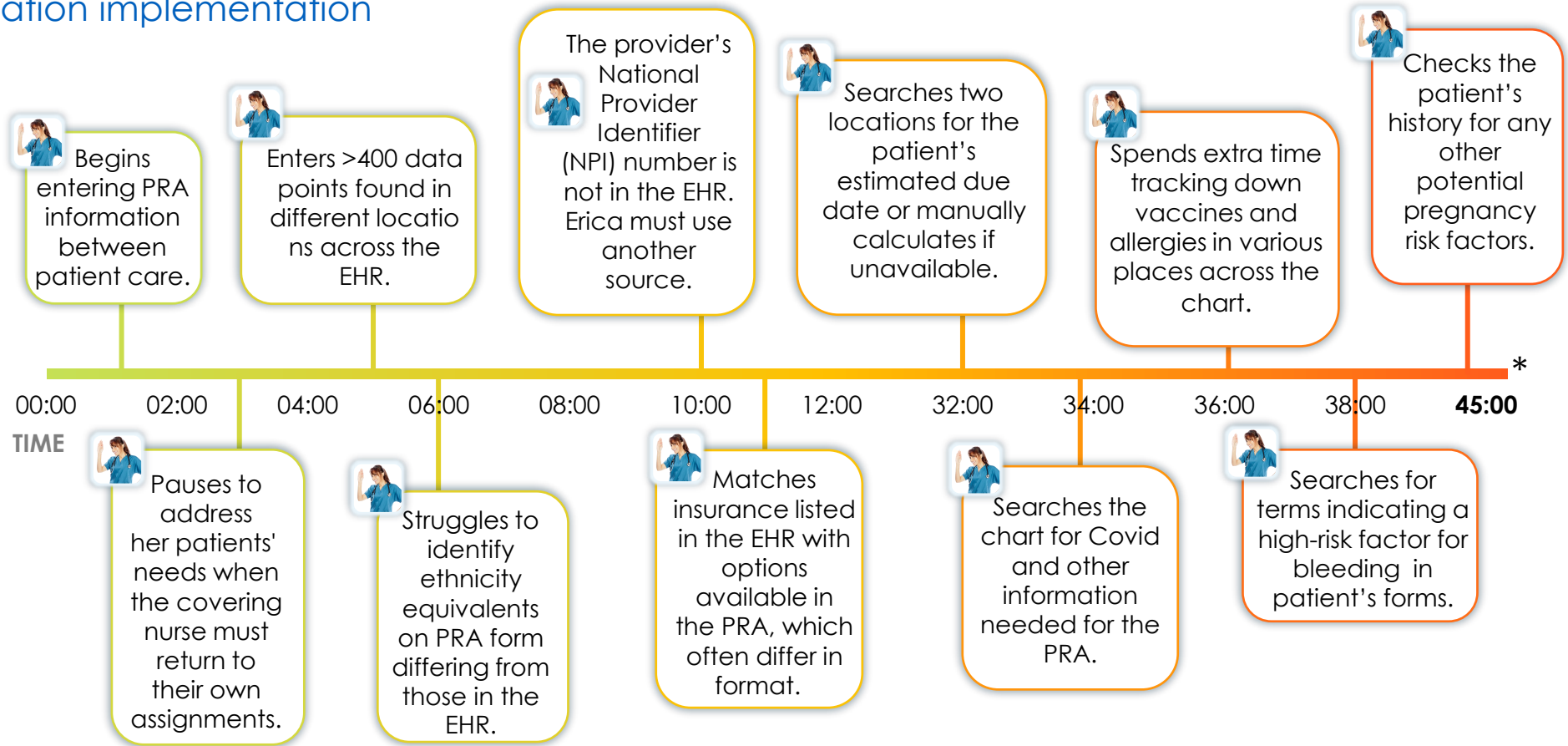


**This is Erica.**

Erica is an RN responsible for completing a prenatal risk assessment (PRA) each trimester for 1,600 patients a year.

Erica's required effort: **4,800 manual transfers of information** from electronic health records (EHR) to online form

**2,000 hours** diverted from patient care



Time spent documenting the prenatal risk assessment (PRA) form online

\*Not captured: the interruptions to patient care and information that is not able to be found in the medical record due to inconsistencies in documentation

# Automation opportunities: Prenatal risk assessment journey map

The new workflow with automation

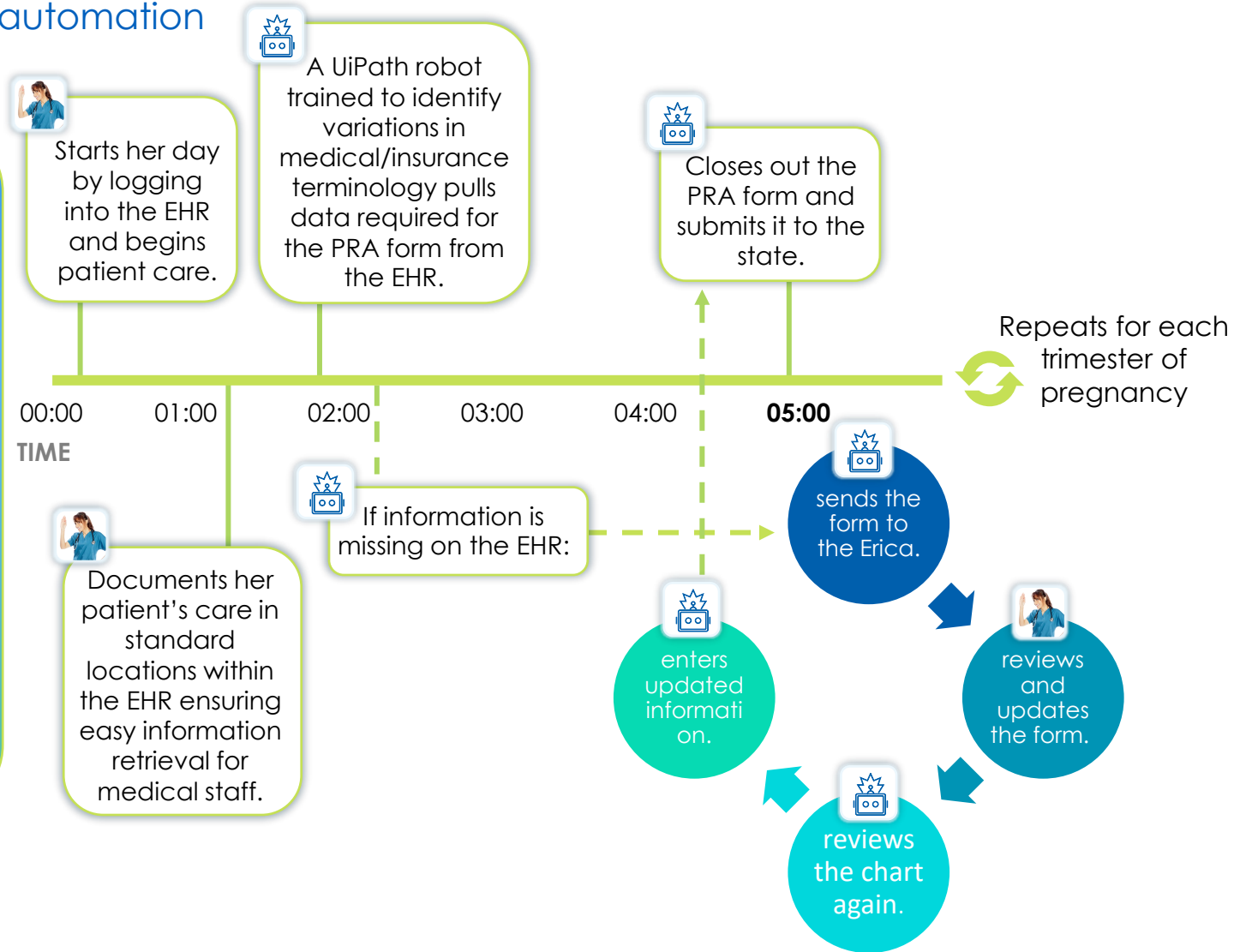


**This is Erica.**

Erica documents patient information in the EHR.

A bot reads the EHR and completes the prenatal risk assessment form. This process ensures easy access to patient information in the future by collating documentation in a single location.

AUTOMATION USE CASE



## Benefits delivered by intelligent automation

Achieve a \$150K in annual savings through increased productivity and accuracy of enrollment.

2,000 clinical hours are freed for RNs to focus on direct patient care, producing shorter wait times and increased delivery of personalized care.

RN satisfaction increases with the reduction of manual and repetitive tasks.